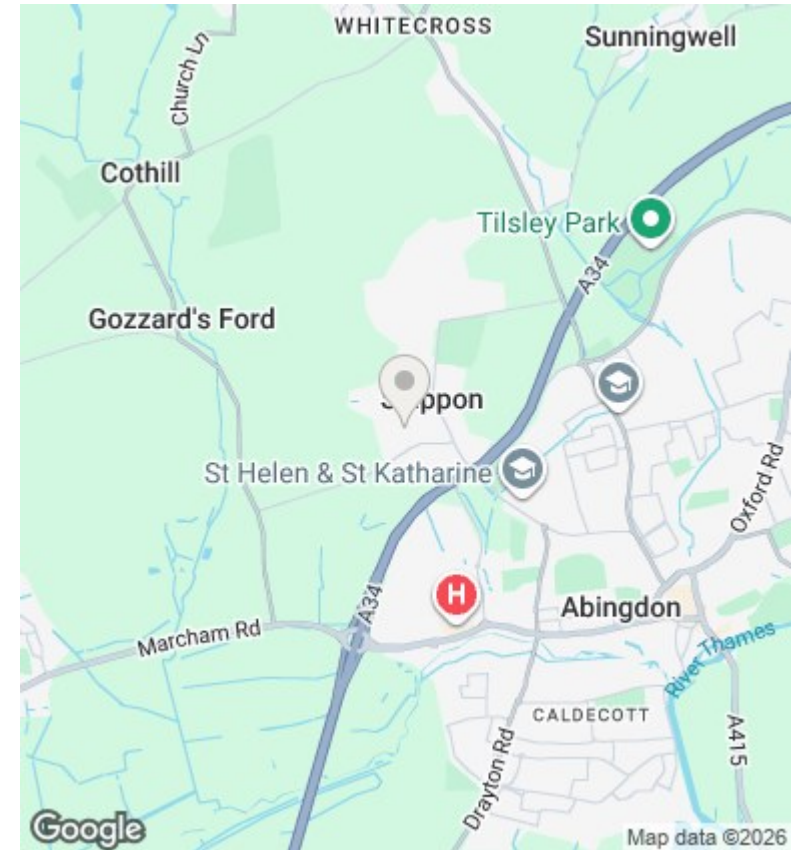
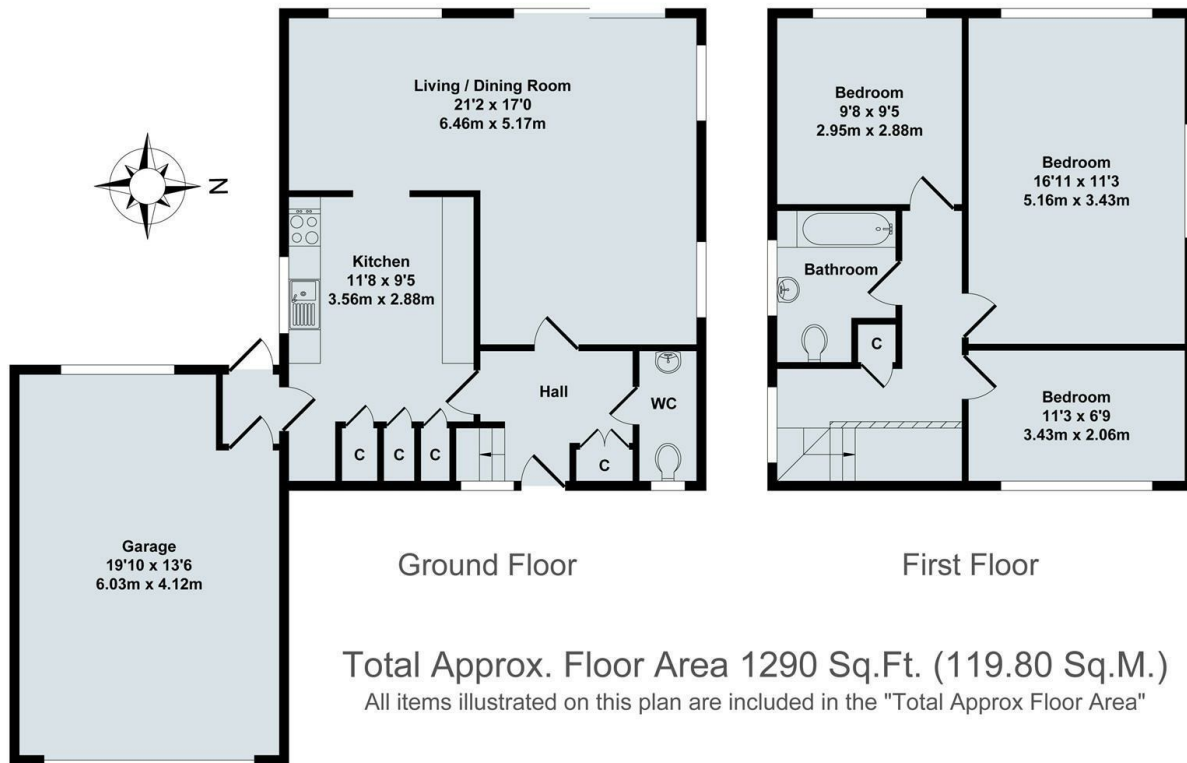




1 Elm Tree Walk, Shippon, Oxfordshire, OX13 6LX

£1,995 Per Month - 1st May 2026.

- 3 Bedroom detached house
- Living/Dining room
- Family Bathroom and downstairs WC
- Garage
- Warm air, Mains Gas Heating
- Large Garden
- Village Location
- EPC Band D
- Council Tax Band E
- SQ FT 1290



Directions

Viewings

Viewings by arrangement only. Call 01235 554950 to make an appointment.

Council Tax Band

E

EPC Rating:

D

Energy Efficiency Rating		Current	Potential
<i>Very energy efficient - lower running costs</i>			
(92 plus)	A		
(81-91)	B		
(69-80)	C		79
(55-68)	D	58	
(39-54)	E		
(21-38)	F		
(1-20)	G		
<i>Not energy efficient - higher running costs</i>			
England & Wales		EU Directive 2002/91/EC	